

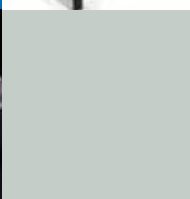
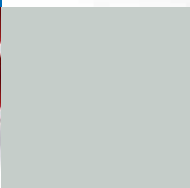


RICHARDSONS
MAKING WORKSPACE WORK

6 Collingwood Court
Riverside Park
Middlesbrough TS2 1RP

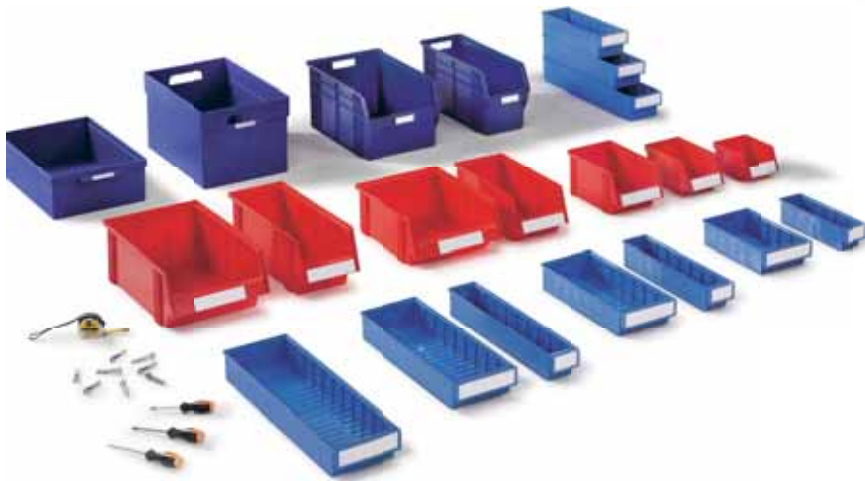
Tel: 01642 242228 | Fax: 01642 242259
www.richardsonsuk.co.uk | sales@richardsonsuk.co.uk

STORAGE SYSTEMS



ergonomics

design



EXPERT SOLUTIONS FOR PROFESSIONALS

We focus on two product lines: technical furniture and storage systems. As professionals we recognize our customers' needs and know how to develop the best products to meet these needs. In addition to high quality and durability we put a lot of effort in product ergonomics and design. Due to the flexibility of our production we can offer customized solutions as well. Treston is an ISO 9001:2008 registered company.

WELL CONSIDERED, EFFICIENT SMALL PARTS STORAGE

Good storage planning requires the combination of many elements. Treston offer a flexible and first class range of storage solutions to build an effective storage system. Our range of small parts cabinets, bin cabinets and many kinds of storage bins give many options to store a wide variety of items. Our storage bins are moulded from sturdy polypropylene, making them strong and stable in all normal conditions. Large label areas offer easy identification of contents, and bin colour options are provided for colour coding systems. Other options include cabinet turntables, stands and trolleys offering further flexibility. If you would like to learn more about our other products, please ask for the following brochures:

- TRESTON technical furniture
- TRESTON ESD protective products for the electronics industry

PLASTIC MATERIALS

- PS = Crystal clear polystyrene: Temperature tolerance -40 ...+55°C.
- PP = Polypropylene: Temperature tolerance -20 ... +75°C. Withstands the effects of most oils, acids and solvents.
- HIPS = Coloured polystyrene: Temperature tolerance -40 ... +55°C



COLOR GROUND PLANS

Colours reproduced here are as accurate as print techniques allow.

Plastic colour



crystal clear RAL 7016 anthracite grey RAL 3020 traffic red RAL 5015 sky blue RAL 5022 night blue

Steel colour



RAL 7035 light grey RAL 7045 grey

flexibility

contents

Visible storage cabinets/series 550 and 290	4 - 5
Turntable assemblies for visible storage cabinets 12-550/PTP-5	6
Cabinet stand and trolley BS-550/BT-550	7
Storage bin cabinets/series 300, 400	8
Turntable assemblies for colour bin cabinets 16-300/16-400	9
Retaining bars A-400	9
High density storage cabinets 2440/4840	10 - 11
Castor set PS-LH, retaining bars A-605	11
Containers, picking bins	11
Shelf bins with corrugated base	12 - 13
Stacking bins	14 - 15
Bin rail 700	14
Crystal clear bins	16 -17
Stacking bin stands and trolley BS-160/BT-170	18
Stacking bin stands BR-2530/BR-4050	19
Gravity flow rack DBS-808	19

visible storage cabinets

Cabinets, which combine a stylish industrial design with practical accessories to provide flexible and efficient small parts storage. Available in two cabinet sizes, 550 and 290 mm high. A compact storage system: one cabinet offers storage for up to 360 different items. Designed with drawer handles recessed within the frame for additional protection during transport. The cabinets can be wall hung, stood on the worktop or mounted on spacesaving turntables.



Series 550

The design combines the use of a strong, dark grey (RAL 7016) polypropylene frame and galvanised steel shelves in such a way that small drawers of crystal clear polystyrene sit securely within the framework. Self adhesive labels are provided for each drawer. Seven different alternatives at 550 high.

Small drawers, see page 17.

Accessories: cross and length dividers

Depth: 180 mm
Width: 310 mm
Height: 550 mm



Code	550-3	551-3	552-3	554-3	556-3	557-3	550C-3
Drawer type (Quantity/cabinet)	L-00 (60 pcs)	L-01 (48 pcs)	L-02 (24 pcs)	L-04 (24 pcs)	L-06 (8 pcs)	L-07 (12 pcs)	L-01 (24 pcs) L-04 (6 pcs) L-06 (2 pcs)
Cross dividers, ordered separately (Quantity/drawer)	V-00 (5 pcs)	V-01 (5 pcs)	V-02 (5 pcs)	V-04 (5 pcs)	V-06 (5 pcs)	V-07 (5 pcs)	V-01 (5 pcs) V-04 (5 pcs) V-06 (5 pcs)
Length dividers ordered separately (Quantity/drawer)	-	V-012 (1 pcs)	V-012 (3 pcs)	V-0456 (1 pcs)	V-0456 (5 pcs)	V-078 (1 pcs)	V-012 (1 pcs) V-0456 (1 pcs) V-0456 (5 pcs)

visible storage cabinets



The overall size of the series 290 is half of the series 550. These cabinets take little space and give you effective storage. They can be wall hung or mounted on spacesaving turntables, stands or stood on the worktop.

Series 290

The design combines the use of a strong, dark grey (RAL 7016) polypropylene frame and galvanised steel shelves in such a way that small drawers of crystal clear polystyrene sit securely within the framework. Self adhesive labels are provided for each drawer. Seven different alternatives at 290 high.

Small drawers, see page 17.

Accessories: cross and length dividers

Depth: 180 mm
Width: 310 mm
Height: 290 mm



Small parts drawers

The crystal clear drawers are transparent, allowing visual identification. Each drawer has a corrugated base to simplify picking. A large, sturdy handle provides a full width label area. Accessories: cross and length dividers. Small drawers, see page 17.

Code	Outer dims	Inner dims
	D x W x H mm	D x W x H mm
L-00	175 x 55 x 37	146 x 47 x 32
L-01	175 x 69 x 37	146 x 61 x 32
L-02	175 x 138 x 37	146 x 128 x 32
L-04	175 x 92 x 59	146 x 82 x 55
L-06	175 x 277 x 59	146 x 266 x 55
L-07	175 x 138 x 81	146 x 128 x 74



Code	290-3	291-3	292-3	294-3	296-3	297-3	290C-3
Drawer type (Quantity/cabinet)	L-00 (30 pcs)	L-01 (24 pcs)	L-02 (12 pcs)	L-04 (12 pcs)	L-06 (4 pcs)	L-07 (6 pcs)	L-01 (12 pcs) L-04 (3 pcs) L-06 (1 pcs)
Cross dividers, ordered separately, (Quantity/drawer)	V-00 (5 pcs)	V-01 (5 pcs)	V-02 (5 pcs)	V-04 (5 pcs)	V-06 (5 pcs)	V-07 (5 pcs)	V-01 (5 pcs) V-04 (5 pcs) V-06 (5 pcs)
Length dividers ordered separately (Quantity/drawer)	-	V-012 (1 pcs)	V-012 (3 pcs)	V-0456 (1 pcs)	V-0456 (5 pcs)	V-078 (1 pcs)	V-012 (1 pcs) V-0456 (1 pcs) V-0456 (5 pcs)

spacemiser

Perfect for storage and identification of thousands of small components. Such assemblies offer storage for up to 4.320 different items on a floor area of only 0,25 sqm.

Spacemiser 12-550

This unit includes a ball bearing base and dividing trays. The assembly holds 12 visible storage cabinets from series 550 in three layers. Each layer consist of four cabinets which are ordered separately. Load capacity 400 kg. Complete assembly's D x W x H : 500 x 500 x 1730 mm.

Bench top spacemiser PTP-5

This unit includes a ball bearing base. It holds 2 visible storage cabinets from series 290 or 550 which are ordered separately. Load capacity 50 kg Complete assembly's D x W x H : 310 x 360 x 300 mm (series 290) 310 x 360 x 560 mm (series 550)

Visible storage cabinets, see page 4-5.



1



2

3

Picture no. 1
1 x spacemiser 12-550
4 x cabinet 551-3
4 x cabinet 554-3
4 x cabinet 557-3

Picture no. 2
1 x bench top spacemiser PTP-5
2 x cabinet 291-3

Picture no. 3
1 x bench top spacemiser PTP-5
2 x cabinet 554-3

cabinets stand and trolley



1 x trolley BT-550
4 x cabinet 551-3
4 x cabinet 554-3

Ideal for maintenance, production and storage areas etc. A practical and flexible storage system, with static and mobile options as required.

Single stand BS-550L

This assembly holds 4 visible storage cabinets of series 550, which are ordered separately. Free standing frame of epoxy powder coated in grey (RAL 7045). 3 aluminium rails are included. Load capacity 50 kg. Overall dimensions D x W x H: 420 x 760 x 1585 mm.

Double stand BS-550T

This assembly holds 8 visible storage cabinets of series 550, which are ordered separately. Construction as single stand. Load capacity 100 kg. Overall dimensions D x W x H: 600 x 760 x 1585 mm.

Trolley BT-550

This assembly holds 8 visible storage cabinets of series 550, which are ordered separately. Construction as double stand. With bottom shelf of 12 mm laminated board. Four castors Ø 100 mm, two with brakes. Load capacity 150 kg. Overall dimensions D x W x H: 600 x 760 x 1700 mm.

Series 550

The design combines the use of a strong, dark grey (RAL 7016) polypropylene frame and galvanised steel shelves in such a way that small drawers of crystal clear polystyrene sit securely within the framework. Self adhesive labels are provided for each drawer. Seven different alternative at 550 high. Accessories: cross and length dividers

Depth: 180 mm
Width: 310 mm
Height: 550 mm

Visible storage cabinets

Code	Drawer Quantity	Ext. drawer dims D x W x H mm
550	60 pcs	175 x 55 x 37
551	48 pcs	175 x 69 x 37
552	24 pcs	175 x 138 x 37
554	24 pcs	175 x 92 x 59
556	8 pcs	175 x 277 x 59
557	12 pcs	175 x 138 x 81
550C	24 pcs 6 pcs 2 pcs	175 x 69 x 37 175 x 92 x 59 175 x 277 x 59



1 x single stand BS-550L
2 x cabinet 551-3
2 x cabinet 554-3



1 x double stand BS-550T
4 x cabinet 551-3
4 x cabinet 554-3

storage bin cabinets

Storage of larger items is easily arranged with storage bin cabinets, which are stackable vertically and may be wall hung or mounted on turntable assemblies. Two sizes of frames, five sizes of bins.

Storage cabinets

Comprises a grey epoxy enamelled steel frame (RAL 7045), colour bins with backstops and labels with protective shields. The crystal clear bins are of polystyrene (PS) and the coloured of polypropylene (PP). (The coloured bins of cabinet 0440 are of polystyrene (HIPS)). Shelf bins are detailed on pages 12 -13.

Accessories

Cross dividers
Retaining bars , see page 9
Turntables, see page 9



Code	crystal clear grey red blue	0830-1 0830-3 0830-5 0830-6	1630-1 1630-3 1630-5 1630-6	0840-1 0840-3 0840-5 0840-6	1640-1 1640-3 1640-5 1640-6	0440-1 – 0440-5 0440-6
Drawer Type		3020	3010	4020	4010	4040
(Quantity/cabinet)		(8 pcs)	(16 pcs)	(8 pcs)	(16 pcs)	(4 pcs)
Frame	depth width height	300 mm 400 mm 395 mm	300 mm 400 mm 395 mm	400 mm 400 mm 395 mm	400 mm 400 mm 395 mm	400 mm 400 mm 395 mm
Cross dividers, ordered separately (Quantity/Drawer)		D-20 (4 pcs)	D-10 (4 pcs)	D-20 (6 pcs)	D-10 (6 pcs)	V-40 (3 pcs)

turntable assemblies



1 x turntable 16-300
8 x cabinet 0830
8 x cabinet 1630

1 x turntable 16-400
8 x cabinet 1640
8 x cabinet 0840

Compact storage systems for use in maintenance, production and storage areas. Space saving practical turntable assemblies are ideal for the storage and easy identification of thousands of components. Such assemblies offer storage for up to 1.792 different items on a floor area of only 0,64 sqm. When wall space is limited the turntable assembly, strategically placed, is a huge space saver. Load capacity 800 kg. Easy assembly without tools.

Retaining bars

Cabinets for mobile service and maintenance vehicles can be equipped with safety/retaining bars. Set includes 4 pieces.

A-400

Suitable for cabinets 0830, 1630, 0840, 1640 and 0440.

16-300

This unit holds 16 Bin Cabinets of 300 mm depth, ordered separately. Load capacity 800 kg. Complete assembly's D x W x H: 700 x 700 x 1680 mm.

16-400

This unit holds 16 Bin Cabinets of 400 mm depth, ordered separately. Load capacity 800 kg. Complete assembly's D x W x H: 800 x 800 x 1680 mm.



1 x retaining bar A 400
1 x cabinet 1640-5

high density storage cabinets



Storage cabinets

High density cabinets can be used in maintenance areas, stores and many other locations. Robust construction. Load capacity 240 kg. Mobile storage option with castors if required. A compact storage system — one cabinet offers storage for up to 336 different items on a floor area of only 0,25 sqm. Each cabinet includes a grey epoxy enamelled steel frame (RAL 7035), shelf bins with backstops, labels and protective shields. Adjustable feet are provided for fine levelling. Load capacity for the cabinet is 240 kg/30 kg per shelf. Dividers are available separately. Details of the shelf bins can be found on pages 12 and 13.

Accessories:

- Cross dividers
- Castor set
- Retaining bars



Code Colour	2440-3 grey	2440-5 red	2440-6 blue	4840-3 grey	4840-5 red	4840-6 blue
Drawer Type (Quantity/cabinet)	4020 (24 pcs)	4020 (24 pcs)	4020 (24 pcs)	4010 (48 pcs)	4010 (48 pcs)	4010 (48 pcs)
Frame depth width height	410 mm 605 mm 870 mm	410 mm 605 mm 870 mm	410 mm 605 mm 870 mm	410 mm 605 mm 870 mm	410 mm 605 mm 870 mm	410 mm 605 mm 870 mm
Cross dividers, ordered separately (Quantity/Drawer)	D-20 (6 pcs)	D-20 (6 pcs)	D-20 (6 pcs)	D-10 (6 pcs)	D-10 (6 pcs)	D-10 (6 pcs)



Castor set PS-LH

A castor set is available to make the high density cabinet mobile. 4 castors Ø 100 mm, 2 with brakes. Load capacity of cabinet with castors is 150 kg. Dimensions of cabinet with castors D x W x H: 410 x 605 x 980 mm.



Retaining bars A-605

Cabinets for mobile service and maintenance vehicles can be equipped with safety/retaining bars. Set includes 8 pieces. Suitable for cabinets 2440 and 4840.

storage bins, picking bins

1. Storage bins

Especially suitable for in-house material flow within factories and warehouses. Material: polypropylene (PP). Colour blue RAL 5022.

2. Containers

Straight sided storage containers of 18 and 36 litres capacity are used for internal and external transport systems. These have integral handles and stack securely together. Material: polypropylene (PP). Colour blue RAL 5022.

3. Picking bins

Picking bins are intended for repeated and rapid picking. All the inner faces are rounded and the front has a distinctive sloping design. Suitable for bench stand and bin rail. Material: coloured polystyrene (HIPS). Colour blue RAL 5015.

Bin rail 700

Bin rail of grey epoxy enamelled (RAL 7045) steel. With fixings for wall mounting. Rail length 700 mm. Picture of the bin rail, see page 14. Accessories: TRESTON stacking and picking bins. Stacking bins, see pages 14 and 15.

	Code	Colour	Outer dims D x W x H mm	Inner dims D x W x H mm
1	1949-60R	blue	490 x 185 x 250	430 x 145 x 195
	3149-60R	blue	490 x 310 x 250	430 x 270 x 195
2	10-18L-60	blue	535 x 323 x 150	480 x 300 x 125
	10-36L-60	blue	508 x 323 x 280	480 x 300 x 210
3	30-1L-6	blue	160 x 99 x 70	100 x 85 x 62
	30-2L-6	blue	160 x 198 x 70	100 x 175 x 62
	30-23L-6	blue	160 x 198 x 70	100 x 175 x 62 (2 fixed length dividers)
4	700	grey	length 700	



shelf bins



Full width label with protective shield is easy to keep clean and change when necessary. The label is included in the price.



Corrugated base eases the picking of very small items.



The shelf bins are particularly suitable for use in small parts retrieval systems and mobile shelving.



Shelf bins

TRESTON shelf bins provide an ideal way of storing small/medium sized items in maintenance, production and stores. The shelf bins are particularly suitable for use in small parts retrieval systems and mobile shelving. Four sizes in depths of 300, 400, 500 or 600 mm. Bright colours are available for easy colour coding systems. A new grey colour has been introduced to this range. Crystal clear bins, even when using the index label provided, allow visible identification of bin contents. Corrugated base eases the picking of very small items. Full width label with protective shield is easy to keep clean and change when necessary. The label is included in the price.

Accessories:

Cross dividers, translucent plastic

Labels, see page 14

Blanking piece FP6M, to produce flat surface for adhesive barcode labels on inside rear wall of bins.

Material

- PS = Crystal clear polystyrene:
Temperature tolerance
-40 ... +55°C.
- PP = Polypropylene:
Temperature tolerance
-20 ... +75°C. Withstands the effects of most oils, acids and solvents.



Individual bins can be sub-divided internally using dividers, ordered separately.



The shelf bins feature a molded in label holder on inside rear wall of bin and on the divider. Labels ordered separately, see page 16.



Blanking piece FP-6 M to produce flat surface for adhesive barcode labels on inside rear wall of bins. The adhesive labels are suitable for the smooth side of the divider.

	Code	Colour	Material	Outer dims D x W x H mm	Inner dims D x W x H mm	Cross divider	Number/ bin
	3010-1 3010-3 3010-5 3010-6	crystal clear grey red blue	PS PP PP PP	300 x 92 x 82	257 x 75 x 70	D-10	4 pcs
	4010-1 4010-3 4010-5 4010-6	crystal clear grey red blue	PS PP PP PP	400 x 92 x 82	357 x 75 x 70	D-10	6 pcs
	5010-1 5010-3 5010-5 5010-6	crystal clear grey red blue	PS PP PP PP	500 x 92 x 82	457 x 75 x 70	D-10	8 pcs
	3015-1 3015-3 3015-5 3015-6	crystal clear grey red blue	PS PP PP PP	300 x 132 x 100	257 x 110 x 90	D-15	4 pcs
	4015-1 4015-3 4015-5 4015-6	crystal clear grey red blue	PS PP PP PP	400 x 132 x 100	357 x 110 x 90	D-15	6 pcs
	5015-3 5015-5 5015-6	grey red blue	PP PP PP	500 x 132 x 100	457 x 110 x 90	D-15	8 pcs
	6015-3 6015-5 6015-6	grey red blue	PP PP PP	600 x 132 x 100	557 x 110 x 90	D-15	10 pcs
	3020-1 3020-3 3020-5 3020-6	crystal clear grey red blue	PS PP PP PP	300 x 186 x 82	257 x 167 x 70	D-20	4 pcs
	4020-1 4020-3 4020-5 4020-6	crystal clear grey red blue	PS PP PP PP	400 x 186 x 82	357 x 167 x 70	D-20	6 pcs
	5020-1 5020-3 5020-5 5020-6	crystal clear grey red blue	PS PP PP PP	500 x 186 x 82	457 x 167 x 70	D-20	8 pcs
	6020-1 6020-3 6020-5 6020-6	crystal clear grey red blue	PS PP PP PP	600 x 186 x 82	557 x 167 x 70	D-20	10 pcs

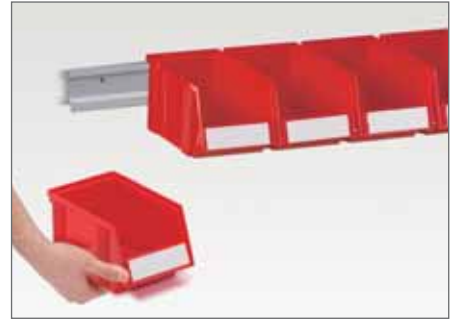
stacking bins



The open fronted design allows good access.



Corrugated base eases picking of small parts.



Bin rail 700 for stacking and picking bins. The rail of grey epoxy enamelled (RAL 7045) steel. With fixings for wall mounting. Length 700 mm. Suitable for stacking bins 1015 - 1930, ordered separately.



TRESTON stacking bins

Designed to facilitate easy stock selection and picking. The open front gives good access, and the corrugated base helps to retrieve contents, especially smaller sized and flat objects. 8 sizes available. Our stacking bins are suitable for stands, trolley, bin rails, table stands, standard metric shelving and parts retrieval systems. Bright colours are available for colour coding. A new grey colour has been introduced to this range. The crystal clear bin allows visual identification of the contents, even when an index label is used.

Accessories:

Cross dividers, of grey epoxy enamelled steel (RAL 7035).
Labels with protective self-adhesive
Bin rail 700

Material

- PS = Crystal clear polystyrene: Temperature tolerance -40 ... +55°C.
- PP = Polypropylene: Temperature tolerance -20 ... +75°C. Withstands the effects of most oils, acids and solvents.




Full width label with protective self-adhesive shield is easy to keep clean and change when necessary. Labels ordered separately.



Cross dividers, of grey epoxy enamelled steel (RAL 7035).



The adhesive labels can be fixed to the front side and to the divider.

	Code	Colour	Material	Outer dims D x W x H mm	Inner dims D x W x H mm	Cross divider	Number/ bin	Label + shield
	1015-1 1015-3 1015-5 1015-6	crystal clear grey red blue	PS PP PP PP	165 x 105 x 75	105 x 90 x 65	—	—	E-10
	1520-1 1520-3 1520-5 1520-6	crystal clear grey red blue	PS PP PP PP	192 x 149 x 105	130 x 125 x 90	—	—	E-15
	1525-1 1525-3 1525-5 1525-6	crystal clear grey red blue	PS PP PP PP	250 x 149 x 130	185 x 125 x 115	V-14	1 pcs	E-15
	1930-1 1930-3 1930-5 1930-6	crystal clear grey red blue	PS PP PP PP	300 x 186 x 156	230 x 155 x 140	V-19	1 pcs	E-20
	1940-1 1940-3 1940-5 1940-6	crystal clear grey red blue	PS PP PP PP	400 x 186 x 156	330 x 155 x 140	V-19	3 pcs	E-20
	1950-1 1950-3 1950-5 1950-6	crystal clear grey red blue	PS PP PP PP	500 x 186 x 182	400 x 145 x 165	V-195	3 pcs	E-20
	3040-3 3040-5 3040-6	grey red blue	PP PP PP	400 x 310 x 156	315 x 270 x 140	V-30	3 pcs	E-20
	3050-3 3050-5 3050-6	grey red blue	PP PP PP	500 x 310 x 182	400 x 270 x 165	V-30	3 pcs	E-20

transparent shelf bins



Shelf bins

Crystal clear bins, even when using the index label provided, allow visible identification of bin contents.

Accessories

Cross dividers, labels. Blanking piece FP6M, to produce flat surface for adhesive barcode labels on inside rear wall of bins.

Material

- bins and dividers of crystal clear polystyrene (PS)
- colour shelf bins, see pages 12 and 13.

TRESTON BINS				ACCESSORIES				
	Code	Outer dims D x W x H mm	Inner dims D x W x H mm	Cross divider	Quantity/ drawer	Labels	Acrylic shields	
	Shelf bins with labels	3010-1	300 x 92 x 82	257 x 75 x 70	D-10	4 pcs	1868	S-10
		4010-1	400 x 92 x 82	357 x 75 x 70	D-10	6 pcs	1868	S-10
		5010-1	500 x 92 x 82	457 x 75 x 70	D-10	8 pcs	1868	S-10
		3015-1	300 x 132 x 100	257 x 110 x 90	D-15	4 pcs	3532	S-15
		4015-1	400 x 132 x 100	357 x 110 x 90	D-15	6 pcs	3532	S-15
		3020-1	300 x 186 x 82	257 x 167 x 70	D-20	4 pcs	1123	S-20
		4020-1	400 x 186 x 82	357 x 167 x 70	D-20	6 pcs	1123	S-20
		5020-1	500 x 186 x 82	457 x 167 x 70	D-20	8 pcs	1123	S-20
		6020-1	600 x 186 x 82	557 x 167 x 70	D-20	10 pcs	1123	S-20
	Dividers	D-10 D-15 D-20	Accessories: paper labels				1792 1792 1792	
	Blanking piece	FP6M	Blanking piece to produce flat surface for adhesive barcode labels on inside rear wall of bins.					

transparent stacking bins



Stacking bin

The open fronted design allows good access. The crystal clear bin allows visual identification of the contents. Of crystal clear polystyrene (PS). Accessories: Cross dividers, of grey epoxy enamelled steel (RAL 7035) and label with shield.

Small drawers

Drawers with adhesive labels. Each drawer has a corrugated base to simplify picking. Accessories: cross and length dividers. Drawers and dividers of polystyrene (PS).

TRESTON BINS				ACCESSORIES				
	Code	Outer dims D x W x H mm	Inner dims D x W x H mm	Cross divider	Quantity/ drawer	Length dividers	Quantity/ drawer	Labels + shield
	Stackin bins	1015-1	165 x 105 x 75	105 x 90 x 65	—	—	—	E-10
	1520-1	192 x 149 x 105	130 x 125 x 90	—	—	—	—	E-15
	1525-1	250 x 149 x 130	185 x 125 x 115	V-14	1 pcs	—	—	E-15
	1930-1	300 x 186 x 156	230 x 155 x 140	V-19	1 pcs	—	—	E-20
	1940-1	400 x 186 x 156	330 x 155 x 140	V-19	3 pcs	—	—	E-20
	1950-1	500 x 186 x 182	400 x 145 x 165	V-195	3 pcs	—	—	E-20
		Drawers with labels	L-00	175 x 55 x 37	146 x 47 x 32	V-00	5 pcs	—
L-01		175 x 69 x 37	146 x 61 x 32	V-01	5 pcs	V-012	—	—
L-02		175 x 138 x 37	146 x 128 x 32	V-02	5 pcs	V-012	1 pcs	—
L-04		175 x 92 x 59	146 x 82 x 55	V-04	5 pcs	V-0456	3 pcs	—
L-06		175 x 277 x 59	146 x 266 x 55	V-06	5 pcs	V-0456	5 pcs	—
L-07		175 x 138 x 81	146 x 128 x 74	V-07	5 pcs	V-078	1 pcs	—

stacking bin stands and trolley

The free standing bin stands are a compact storage system for use in production, maintenance and storage areas. With the bin trolley you can bring mobile storage directly to your workstation.

Single stand BS-160LA

Free standing frame of epoxy powder coated steel in grey (RAL 7045). 8 adjustable aluminium bin rails are included which may be positioned at 39 mm increments. Length of rail 753 mm. Load capacity per rail is 15 kg. Total load for the stand is 120 kg. Stacking bins are ordered separately. Overall size D x W x H: 420 x 830 x 1585 mm.

Suitability

Stacking bin	Quantity/ bin rail	Max quantity/ bin stand
1015	7 pcs	56 pcs
1520	5 pcs	40 pcs
1525	5 pcs	40 pcs
1930	4 pcs	32 pcs

Double stand BS-160TA

Free standing frame of epoxy powder coated steel in grey (RAL 7045). 8 adjustable, double sided aluminium bin rails are included which may be positioned at 39 mm increments. Length of rail 753 mm. Load capacity: bin rail 15 kg to front and 15 kg to back (total 30 kg). Total load for the stand is 240 kg. Stacking bins are ordered separately. Overall size D x W x H: 600 x 830 x 1585 mm.

Suitability

Stacking bin	Quantity/ bin rail	Max quantity/ bin stand
1015	14 pcs	112 pcs
1520	10 pcs	80 pcs
1525	10 pcs	80 pcs
1930	8 pcs	64 pcs

Trolley BT-170A

As double stand. Bottom shelf of 12 mm laminated board. 4 castors Ø 100 mm, 2 with brakes. Total load for the trolley is 150 kg. Stacking bins are ordered separately. Overall size D x W x H: 600 x 830 x 1700 mm.

Suitability

Stacking bin	Quantity/ bin rail	Max quantity/ bin trolley
1015	14 pcs	112 pcs
1520	10 pcs	80 pcs
1525	10 pcs	80 pcs
1930	8 pcs	64 pcs



1 x trolley BT-170A
40 x stacking bin 1520-6
32 x stacking bin 1930-6



1 x single stand BS-160LA
20 x stacking bin 1520-5
16 x stacking bin 1930-5



1 x double stand BS-160TA
40 x stacking bin 1520-6
32 x stacking bin 1930-6

stacking bin stands, gravity flow rack



1 x bin stand BR-2530
35 x stacking bin 1930-5



1 x bin stand BR-4050
30 x stacking bin 1940-3

Bin stand BR-2530

7 fixed, inclined storage levels, length 930 mm. Load capacities 50 kg per level and 350 kg per stand. Constructed from epoxy powder coated steel, colour grey (RAL 7035). Stacking bins are ordered separately. Overall size D x W x H: 500 x 990 x 1540 mm.

Suitability

Stacking bin	Quantity/ level pair	Max quantity/ bin stand
1525	6 pcs	42 pcs
1930	5 pcs	35 pcs

Bin stand BR-4050

6 fixed, inclined storage levels, length 930 mm. Load capacities 50 kg per level and 300 kg per stand. Constructed from epoxy powder coated steel, colour grey (RAL 7035). Stacking bins are ordered separately. Overall size D x W x H: 600 x 990 x 1670 mm.

Suitability

Stacking bin	Quantity/ level pair	Max quantity/ bin stand
1940	5 pcs	30 pcs
1950	5 pcs	30 pcs
3040	3 pcs	18 pcs
3050	3 pcs	18 pcs

Gravity flow rack DBS-808

For use in workshop, production and storage areas etc. An efficient way of storing small parts. By using inclined shelves, bins will move by gravity from the restocking to the picking side of the rack system. 6 storage shelves which may be adjusted for height and angle. It holds 48 stacking bins of type 1940 which are ordered separately. Constructed from epoxy powder coated steel, colour grey (RAL 7035). Adjustable feet are provided for fine levelling. Load capacities: 70 kg per shelf and 420 kg per stand.

Self size: 700 x 755 mm.

Overall size D x W x H: 825 x 830 x 1650 mm.

1940 bin, see page 15.

Castor set, to order only.



1 x gravity flow rack DBS-808
48 x stacking bin 1940-6